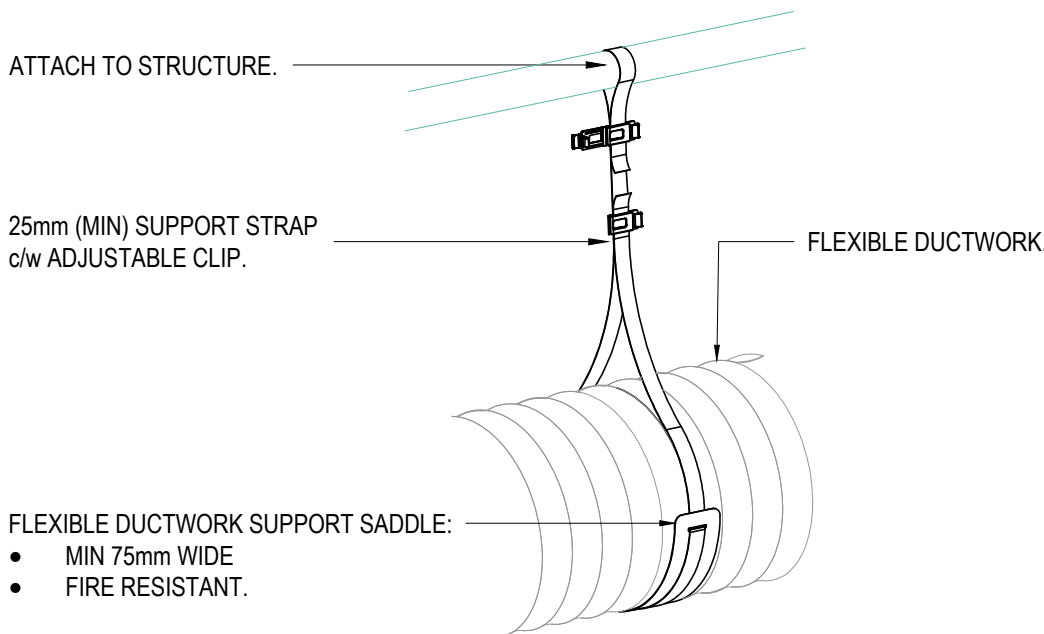
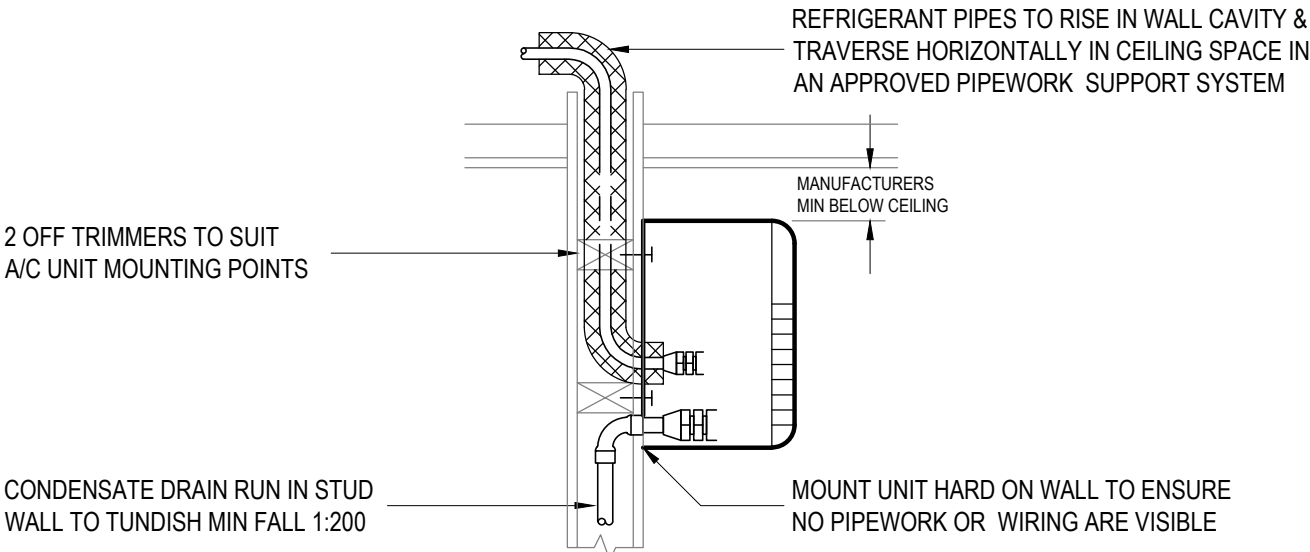


REFRIGERANT PIPEWORK INSTALLATION DETAIL
NOT TO SCALE

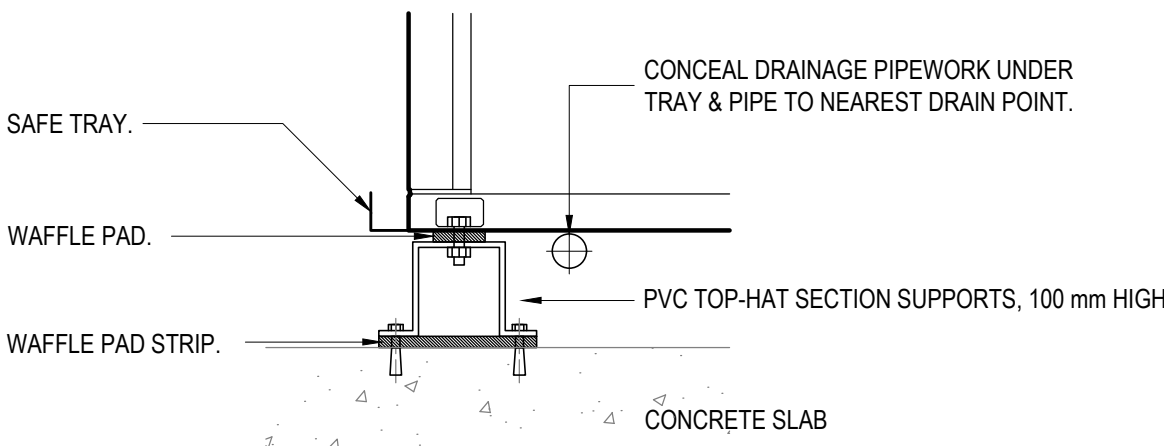


FLEXIBLE DUCT MOUNTING DETAIL
NOT TO SCALE

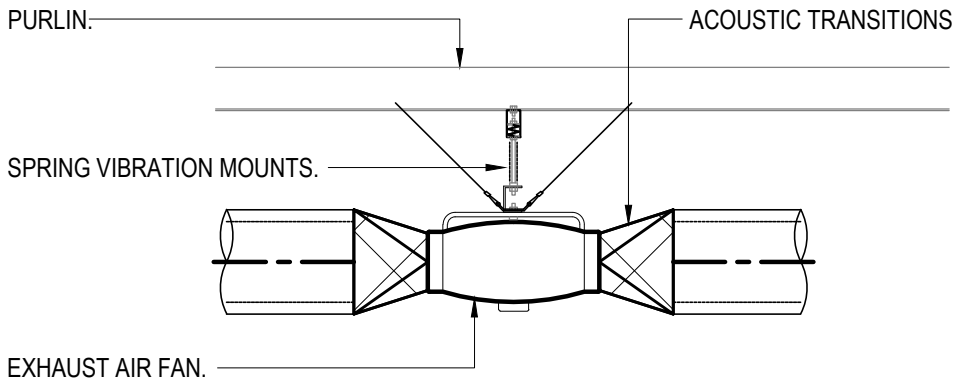
NB: FLEXIBLE DUCTWORK SUPPORT SPACING IS TO BE: 1.5m (MAX).



WALL SPLIT A/C UNIT MOUNTING DETAIL
NOT TO SCALE



CONDENSER MOUNTING DETAIL
NOT TO SCALE



TYPICAL INSTALLATION OF INLINE EXHAUST FAN
NOT TO SCALE

LEGEND



FLEXIBLE DUCTWORK ACOUSTICALLY INSULATED TO NCC R-VALUE MINIMUM REQUIREMENTS, (REFER GRILLE SCHEDULE FOR SIZE)



SHEETMETAL CIRCULAR DUCT, LENGTH AS SHOWN ON PLAN.



CEILING EXHAUST FAN.



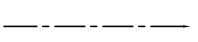
WEATHERPROOF LOUVRE c/w VERMIN PROOF MESH.



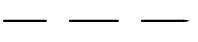
CONTROL SWITCH PANEL.



GRILLE ID.



REFRIGERANT PIPEWORK AND WIRING (ONE LINE SHOWN FOR CLARITY).



CONDENSATE DRAIN.



IN WALL TUNDISH (BY BUILDER).

DESIGNATIONS:

ACC

AIR COOLED CONDENSER.

FCU

FAN COIL UNIT.

GEF

GENERAL EXHAUST FAN.

RH

RANGEHOOD.

GENERAL NOTES

- ACCESS PANELS TO BE SUITABLE SIZE FOR EQUIPMENT SERVICING & DAMPER ADJUSTMENT AND SHALL BE CO-ORDINATED WITH ALL TRADES WITH FINAL LOCATIONS APPROVED BY THE ARCHITECT.
- CONFIRM ALL DIMENSIONS ON SITE PRIOR TO THE MANUFACTURE OF ANY DUCTWORK AND INSTALLATION OF EQUIPMENT.
- MECHANICAL DRAWINGS TO BE READ IN CONJUNCTION AND CO-ORDINATED WITH ALL OTHER SERVICES DOCUMENTS, ARCHITECTURAL DRAWINGS AND MECHANICAL SPECIFICATION.
- ENSURE A 150mm LIGHTING ZONE IS PROVIDED BENEATH ALL EQUIPMENT & HARD DUCTWORK.
- ENSURE ALL EQUIPMENT DUCTWORK & FITTINGS CAN BE ACCOMMODATED IN THE SPACE ALLOCATED & BE EASILY MAINTAINED TO MANUFACTURERS RECOMMENDATIONS.
- THE CONTRACTOR IS TO MAKE ALL DUE ALLOWANCE TO COMPLETE THE PROJECT TO THE SATISFACTION OF THE PRINCIPAL.
- ALL SERVICES ARE TO BE CONCEALED UNLESS OTHERWISE STATED.
- FLEXIBLE DUCTWORK TO BE ACOUSTIC AND FIRE RESISTANT.
- CONTROL PANELS TO BE MOUNTED 1500 AFL UNLESS NOTED OTHERWISE. FINAL LOCATIONS TO BE APPROVED BY THE PRINCIPAL ON SITE.
- PAINT INTERNAL SURFACES OF REGISTER BOXES AND RETURN AIR BOXES/DUCTS WITH MATT BLACK.
- REFRIGERANT PIPEWORK INSULATION TO NCC R-VALUE R1.2 MINIMUM TO BE CLOSED CELL NITRATE AND FIRE RATED. PROVIDE COLOURBOND CAPPING TO ALL EXPOSED PIPEWORK & INSULATION.
- DO NOT SCALE OFF DRAWINGS - MODIFICATIONS TO DOCUMENTATION CANNOT BE MADE WITHOUT WRITTEN APPROVAL FROM SECON CONSULTING ENGINEERS.
- FIT SAFETY DRAIN TRAYS UNDER ALL CONDENSING UNITS IF DRAIN TRAY KITS ARE NOT AVAILABLE AS A STANDARD ITEM.
- ALL REQUIRED PENETRATIONS TO BE PROVIDED BY THE MECHANICAL CONTRACTOR, UNLESS OTHERWISE NOTED.
- WHERE EQUIPMENT IS FITTED BACK-TO-BACK ENSURE SERVICES ARE ACOUSTICALLY SEALED THROUGH WALL.
- ANY DISCREPANCY OR OMISSIONS BETWEEN THE DRAWINGS AND SPECIFICATIONS SHALL BE ADDRESSED TO SECON FOR CLARIFICATION PRIOR TO CLOSE OF TENDER.
- INFORMATION PROVIDED ON THE DRAWINGS SHALL BE READ AS DIAGRAMMATIC ONLY, WITH FINAL SPATIAL REQUIREMENTS TO BE CHECKED AND CONFIRMED FOR SUITABILITY BY THE MECHANICAL CONTRACTOR

PRELIMINARY DRAWINGS FOR
INFORMATION ONLY, NOT FOR PRICING.
SERVICES ARE YET TO BE COORDINATED.

Rev	Date	Issue Description	By
-----	------	-------------------	----

Project
1 (LOT 181) GLENBURNIE TERRACE
PLYMPTON, SA 5038
PROPOSED APARTMENTS

Title
MECHANICAL SERVICES
HVAC - DETAILS SHEET

Architect
URBANIZE
ARCHITECT
PTY. LTD. A.B.N. 21 093 044 427
TEL. 9338 1988 FAX. 9352 8477
233 BACOT RD SUBIACO 6008
PO Box 1940 SUBIACO 6904

SECON
consulting engineers
456 PULTENEY STREET
ADELAIDE
SOUTH AUSTRALIA 5000
TEL. 08 5223 7800
engineers@secon.net.au
A.B.N. 30 613 300 299
A.C.N. 613 300 299

© COPYRIGHT SECON PTY. LTD. 2019			
North 	DRAWN	TB	CHECKED
	ENG	SMC	Q.A.
	DATE	MAR 19	SCALE
	DRAWING No.	B9025-M-SK04	
PLOT DATE: 4/29/2019		Size: A1	Rev: 0



BUILDING RULES